

# LanTEEAL 2.0

## Quickstart

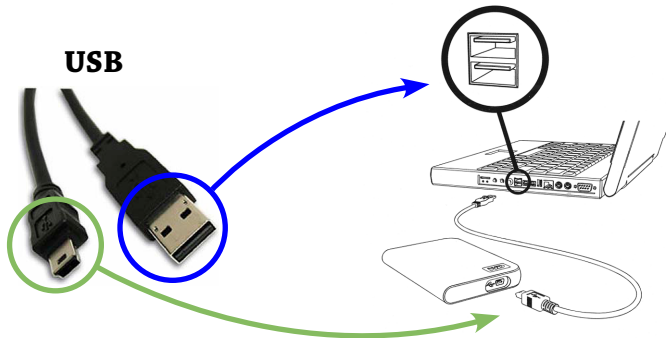
**for a standalone computer**

*for detailed instructions on setting up  
LanTEEAL 2.0 on a network, see the  
**Setup and Installation Guide***

# 1

## Connect drive to computer

- Plug the small end of the USB cable into the port on the side of the hard drive. Plug the larger, flat end into your server, workstation, or laptop.
- Allow up to two minutes for the computer to recognize the drive.
- An icon with a green arrow will appear in the system tray. The drive will appear in My Computer as LanTEEAL 2.0.



# 2

## Check operating system

- You must have either Windows® 2000, Windows® XP, or Windows® Vista on the computer where you wish to install LanTEEAL 2.0.
- To check your operating system (if running any version of Windows), right-click **My Computer**. Click **Properties**. The text on the right-hand side of the page will show what operating system you have.
- If you are not running one of these three operating systems, you will not be able to run LanTEEAL 2.0.

# 3

## Uninstall old TEEAL versions

- Go to **Start > Control Panel > Add/Remove Programs** (or **Programs and Features** in Windows Vista). If you see TEEAL for Networks or LanTEEAL 2.0, click it and then click **Remove** (**Uninstall** for Windows Vista).
- If Windows asks you to remove shared files, click **Yes to All**.

# 4

## Install required software

- You must have the Microsoft® .NET Framework 2.0 (or higher). To check, go to **Start > Control Panel > Add/Remove Programs** (or **Programs and Features** in Windows Vista). Look through the list for Microsoft® .NET Framework 2.0 (or higher).
- If you do not have the Framework, go to **My Computer** and double-click **LanTEEAL 2.0** to open the hard drive. Go to **Additional Files\Microsoft .NET Framework**, choose your language, and pick a version. Windows XP uses **dotnetfx2** or **3**; Windows Vista uses **dotnetfx3** or **dotnetfx35sp1**. Double-click the installer program and follow the instructions.

# 5

## Install LanTEEAL 2.0

- Open **My Computer** > **LanTEEAL 2.0**.
- Scroll to the bottom of the window and double-click **LanTEEAL 2.0 Setup.exe**.
- Follow the setup instructions. This may take a few minutes.
- Once installed, launch LanTEEAL 2.0 by clicking on the icon on your desktop. LanTEEAL 2.0 will open in your default browser (Internet Explorer or Mozilla Firefox).
- If your firewall asks to allow LanTEEAL 2.0 to access the Internet, choose **Yes**. If Windows asks to unblock or keep blocking the program, choose **Unblock**.

# 6

## Use LanTEEAL 2.0

- See our “Getting Started” brochure for step-by-step instructions on searching and browsing for articles in LanTEEAL 2.0.
- All articles are in PDF and open in Adobe® Reader®.
- If you need to install Adobe® Reader®, go to **My Computer > LanTEEAL 2.0 > Additional Files > Adobe Reader** and double-click **Adobe Reader 9 en\_US.exe**.
- If you need more help setting up LanTEEAL 2.0, read the provided Setup & Installation Guide.